



# MASTER SPECIFICATION SHEET- GRADED MEASUREMENTS

## SUBMNJK009 UNISEX JACKET

<b>Division:</b>	Sublimated	<b>Code Number:</b>	SUBMNJK009	<b>Description:</b>	Unisex Jacket
------------------	------------	---------------------	------------	---------------------	---------------

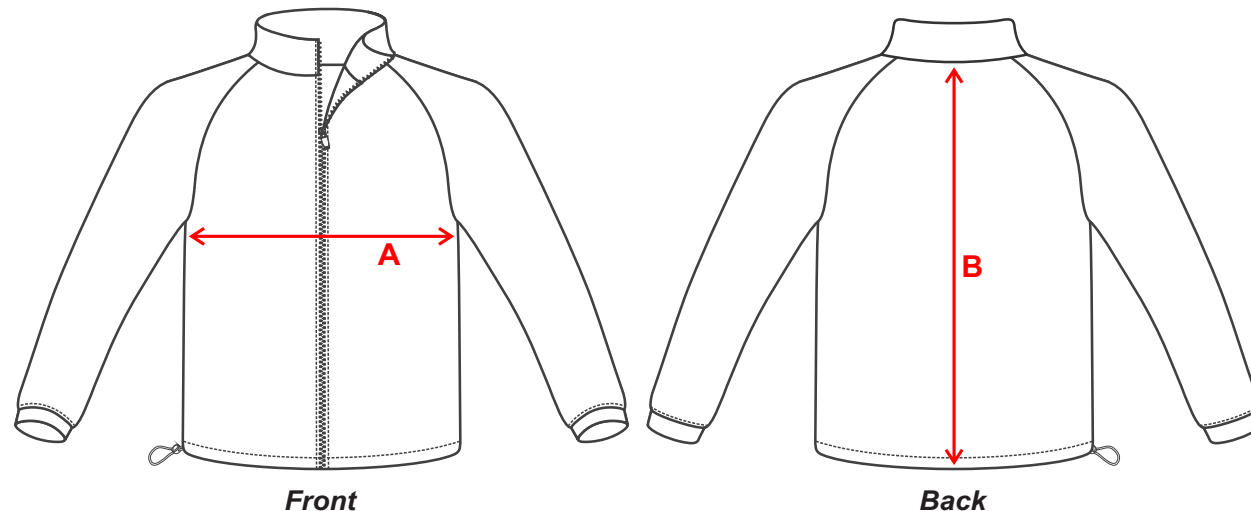
### MEASUREMENTS

DETAILS	K2	K4	K6	K8	K10	K12	K14	K16	S	M	L	XL	2XL	3XL	4XL	5XL	6XL
1/2 Chest (on side seam 2cm below armhole)	36	38	40	42	44	46	48	50	52	54	56	58	60	62	64	66	68
Centre Back Length (does not include collar)	50	52	54	56	58	60	62	64	66	71	76	78	78	78	78	79	79

Please allow 1cm tolerance +/- from these measurements

### HOW TO USE THIS GRID

1. Lay out a shirt you like to wear on a firm surface. Lay this flat down, no wrinkles.
2. Use a tape measure to check the 1/2 chest (2cm below armhole and straight across from left side seam to right side seam)
3. Use the tape measure again to check the centre back length (no need to measure the collar, just straight down from the collar/body seam to the bottom of the shirt).
4. Find as close as possible on the above chart and that is the size we recommend you order.



- A** 1/2 Chest (on side seam 2cm below armhole)
- B** Centre Back Length (does not include collar)