



MASTER SPECIFICATION SHEET- GRADED MEASUREMENTS

SUB MN009B UNISEX CUT FOR KIDS AND ADULTS

| | | | | | |
|------------------|------------|---------------------|-------------|---------------------|-------------|
| Division: | Sublimated | Code Number: | SUB MN009 B | Description: | Unisex Polo |
|------------------|------------|---------------------|-------------|---------------------|-------------|

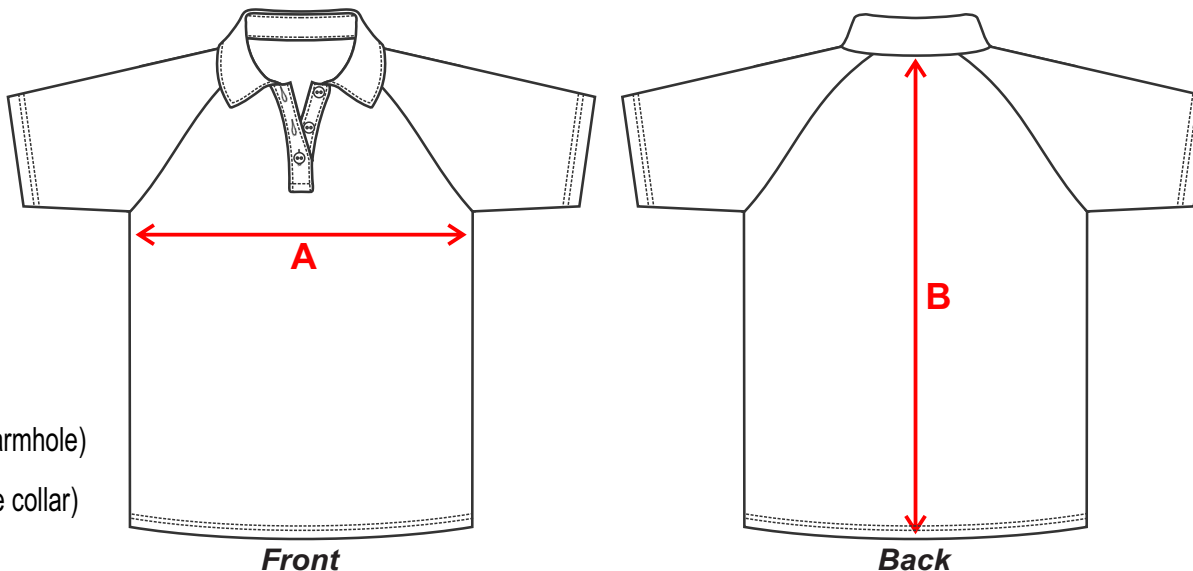
MEASUREMENTS

| DETAILS | K2 | K4 | K6 | K8 | K10 | K12 | K14 | K16 | S | M | L | XL | 2XL | 3XL | 4XL | 5XL | 6XL |
|--|----|----|----|----|-----|-----|-----|-----|----|----|----|----|-----|-----|-----|-----|-----|
| 1/2 Chest (on side seam 2cm below armhole) | 36 | 38 | 40 | 42 | 44 | 46 | 48 | 50 | 52 | 54 | 56 | 58 | 60 | 62 | 64 | 66 | 68 |
| Centre Back Length (does not include collar) | 50 | 52 | 54 | 56 | 58 | 60 | 62 | 64 | 66 | 71 | 76 | 78 | 78 | 78 | 78 | 79 | 79 |

Please allow 1cm tolerance +/- from these measurements

HOW TO USE THIS GRID

1. Lay out a shirt you like to wear on a firm surface. Lay this flat down, no wrinkles.
2. Use a tape measure to check the 1/2 chest (2cm below armhole and straight across from left side seam to right side seam)
3. Use the tape measure again to check the centre back length (no need to measure the collar, just straight down from the collar/body seam to the bottom of the shirt).
4. Find as close as possible on the above chart and that is the size we recommend you order.



A 1/2 Chest (on side seam 2cm below armhole)

B Centre Back Length (does not include collar)

Front

Back